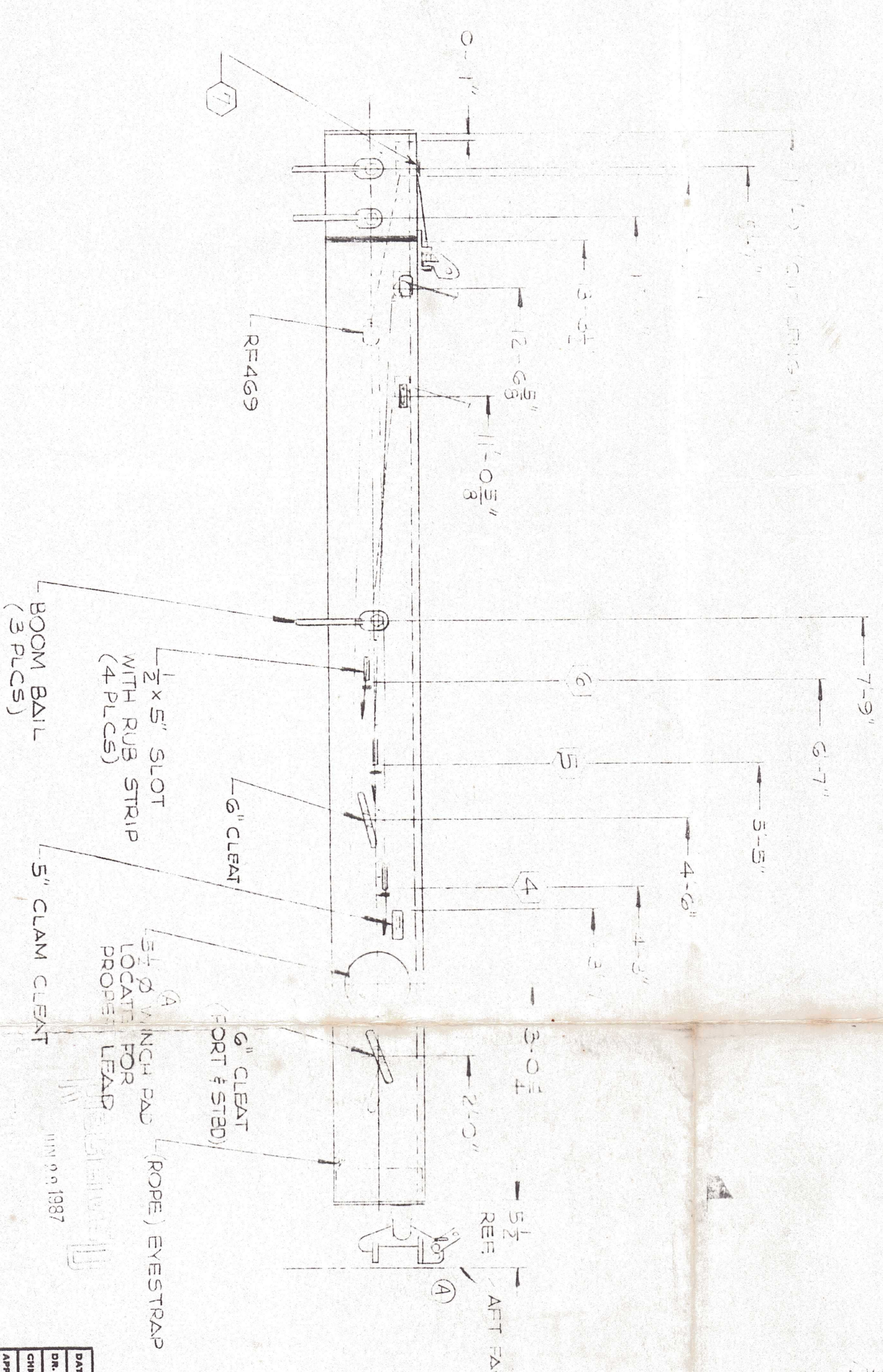
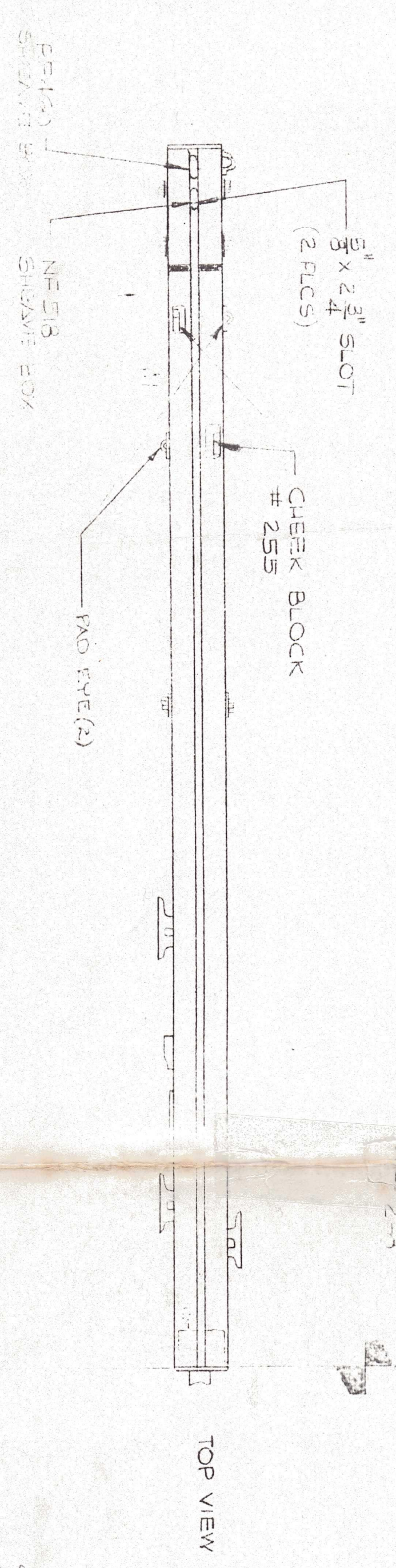
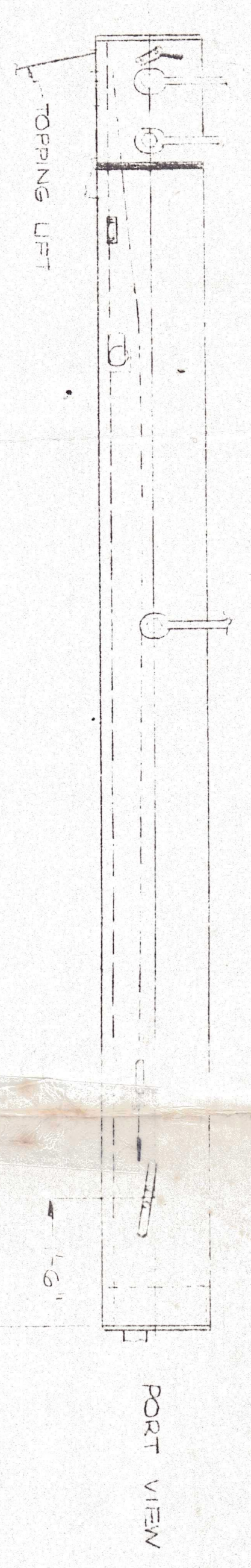


- EYE STRAP (F.P.P.)



REV.	DESCRIPTION	CHANGED BY	APPD BY	DATE
A	5/2 WINCH PAD WAS 4" ADDED	C.R.H.	W. B. G.	6-24-78
B	REFINING HOOKS, CHG TOPPING LIFT			3-15-79
C	REMOVED ROPE EYE STRAPS FOR 1ST & 2ND REEFS. REPLACED W/ SCH #28-04" PAD EYES (TO BE SHIPPED LOOSE)	DT	W. B. G.	6-29-79
D	DRM THE 15.2" WINS 15.2" ADD NOTE 7	DT	W. B. G.	1-31-80
E	CHG MAST REF: 03-8888, WAS DR-BAROT	FOR	W. B. G.	6-17-80
F	ADD 2 REEF PULLEYS	FOR	W. B. G.	4-24-80

- NOTES -
1. BOOM SECTION: OM2C
  2. DIMENSIONS TAKEN FROM THIS POINT
  3. E = 13-9"
  4. OUTHAUL EXIT
  5. FIRST REEF EXIT
  6. SECOND REEF EXIT
  7. MAST WITH HEAD END W/ CHANGER

**CHECK PRINT**  
**CUSTOMER RETENTION**

C3-9185

FOR MAST SEE D3-8222

SEE SEPARATE B/M

DATE DR.	DR. BY	CHKD BY	APPD BY	DESCRIPTION	MATERIAL	MATERIAL SIZE	CUT LENGTH	MATL SPEC
5-3-78	RJT			PETERSON 44 BOOM				
				LMC DESIGN				
				MARINE PRODUCTS				

**LE FIELL MFG. CO.**  
13700 FIRESTONE BLVD.  
SANTA FE SPRINGS, CALIF.

THIS DRAWING IS THE PROPERTY OF LEFELL MANUFACTURING CO. IT IS TO BE RETURNED ON DEMAND. THE IDEAS CONTAINED THEREIN SHALL BE THE PROPERTY OF LEFELL MANUFACTURING CO. ALL IDEAS SHOWN ARE SUBJECT TO THE PATENT RIGHTS OF LEFELL MANUFACTURING CO. THIS DRAWING IS SUBJECT TO THE CONDITIONS HEREIN BEFORE SET FORTH.

S.O. 7784